

# Rates Information Database

Use the rates information database to find out rates information about property in the Waikato district.

If you would like your details made confidential, please complete the [Request to Suppress Personal Information](#) form and return to Waikato District Council. Please note that it is not necessary to complete the form if you have no objection to your name and postal address being published in the Complete Rating Information Database.

If you have a question about your rates, please contact the rates team on [0800 492 452](tel:0800492452) or complete our [online request form](#) for a staff member to contact you directly.

## Property details

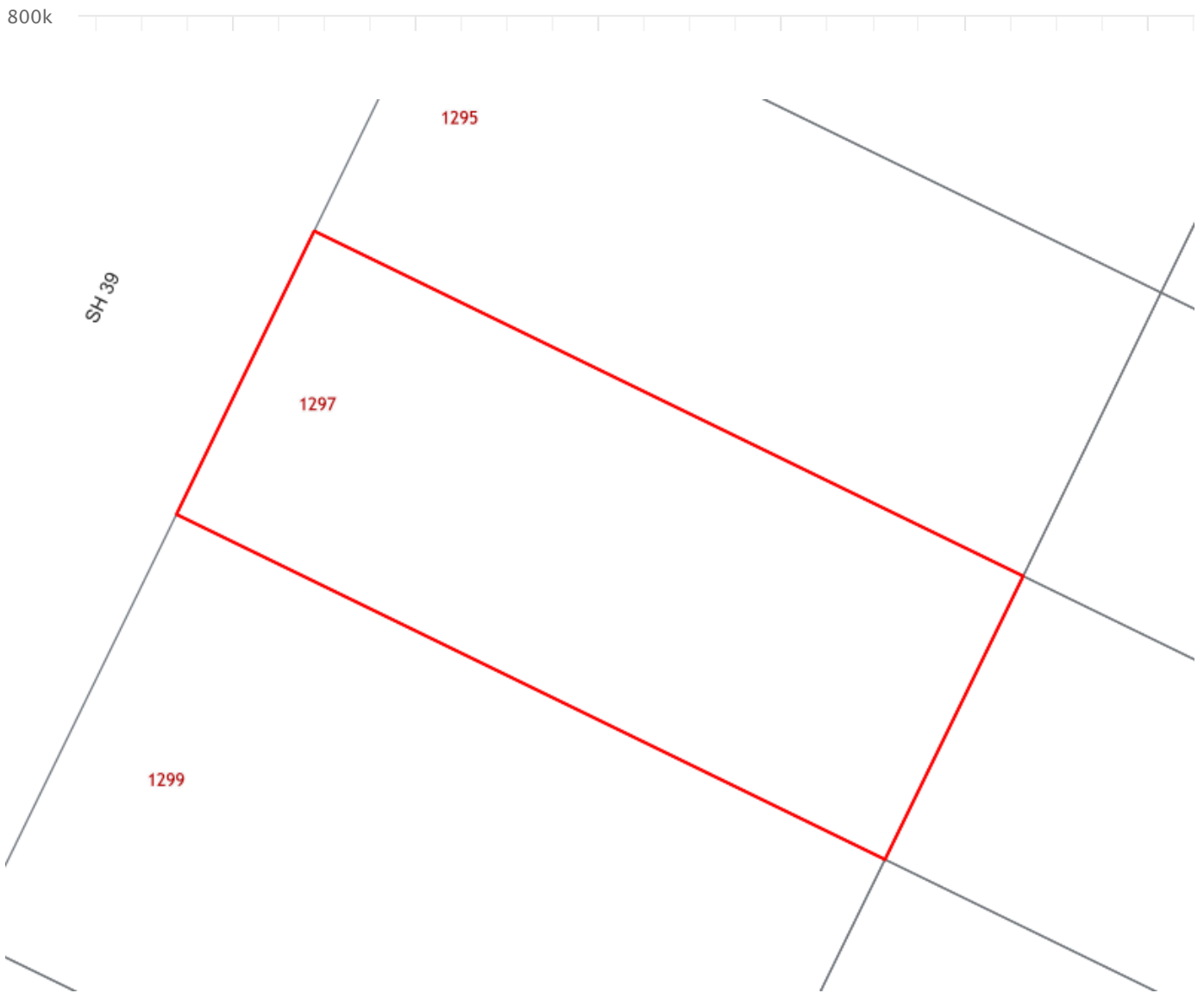
Property location	1297 Horotiu Road WHATAWHATA
Valuation number	04420/521.00
Legal description	LOT 14 DPS 16428 SUBJ TO STORMWATER ESMNT ON DPS 43934

## Property charges (2024/2025)

	Targeted rate factor	Factor applicable	Amount
General Rate	0.21142c/\$	720000.00	\$1,522.22
Uniform Annual General Charge (UAGC)	Fixed Charge	1.00	\$526.15
Whatawhata Community Centre	per dwelling	1.00	\$57.00
Central District Rubbish and Recycling Collection	per dwelling	1.00	\$255.56

**Total rates payable \$2,360.93 incl. GST**

## Property valuation history



⚠ If your property connects to any additional council services between now and the 30 June 2025, there will be additional charges added to your property in the following rating year. If you have any questions or queries with regards to your 2024/25 rates, please complete our online request form for a staff member to contact you directly.

## Download the Antenno app

Use the Antenno app to tell us about things that need our attention, like potholes, graffiti, or broken streetlights.

**More about Antenno** →

